



**Zip HydroBoil range**  
Wall-mounted instant  
boiling water



Featured product  
Zip HydroBoil Plus



## Zip HydroBoil range

### Wall-mounted instant boiling water

High performance instant boiling water systems are a vital consideration in the UK, a nation that regards tea and coffee as an absolute necessity.

With safety, durability and simplicity in mind, Zip's HydroBoil range is designed to easily handle the demands of busy workplaces, commercial kitchens and public buildings, saving power when needed while ensuring boiling water is always available.

Relaunched with a new modern look, the HydroBoil range continues to offer specifiers and end-users the reliable performance they expect, delivering energy and cost efficient boiling water at the touch of a tap.

Every working day in the UK **over eight million cups** of tea or coffee are made using Zip instant boiling water systems.

#### Contents

The benefits of instant boiling water	4
EconoBoil	6
HydroBoil	8
HydroBoil Plus	10
Accessories and consumables	12
Installation guide	14

# Zip HydroBoil

## The benefits of instant boiling water



### Convenience

**No waiting time, no queues at the kettle** the HydroBoil range delivers reliable boiling water that's always within 0.5°C of boiling point, thanks to advanced temperature control. The convenience of instant boiling water saves the user valuable time and can help to increase workplace productivity.



### Space saving

**The wall-mounted boiler saves much needed counter-top and under-counter space.** With the HydroBoil range there's no need for counter-cluttering kettles and exposed power leads.



### Wide range

**Available in 1.5-litre to 40-litre models** for high demand environments such as large offices, restaurants, canteens and hospitals, there's a HydroBoil for every situation.



### Built to last

**At Zip, we only manufacture the highest quality, most durable systems,** offering reliability and long-term performance that you can trust. The HydroBoil range has gone through vigorous testing, giving you peace of mind that your boiler is safe and fit-for-purpose.



### Energy efficient

**Patented Steam-Heat-Boost™ technology** saves energy by recycling steam to pre-heat incoming cold water – making boiling quicker and less costly. The HydroBoil also saves significant amounts of energy by using compressed high temperature insulation, electronic temperature control and advanced Power-Pulse™ technology.



### Easy and safe to use

**Simple, easy to use controls** allow the user to fill a single cup or to keep the water running for a full pot or jug. We've developed a range of safety features to give you complete peace of mind, including the unique cool touch two-way tap on our HydroBoil Plus model, fingertip control for safe cup filling and a safety lock to eliminate the risk of accidental use.



### Cost saving

**No energy is wasted boiling more water than needed** and water heating is done in the most energy efficient way. This means that our HydroBoil systems cost little to run and save energy, helping to offset rising electricity prices.

### Patented twin chamber technology

Stores incoming cold water separately from boiling water

### Patented Steam-Heat-Boost™ system

Recycles energy from steam to pre-heat incoming cold water



### Patented Teflon™ metering tube

Regulates water inflow so boiling water is maintained at set temperature

### Moulded high temperature insulation

Superior heat retention performance minimises boiling water heat loss

# EconoBoil

The EconoBoil is a thermostatically controlled instant boiling water system for locations where affordable reliability is required.

Available in 3 and 5 litre models, the EconoBoil delivers boiling water at a constant temperature, as you would expect from a market leader. The EconoBoil employs patented twin chamber boiling water Steam-Heat-Boost™ technology to recycle energy from steam to preheat the incoming cold water.

The drinking water tank is made from high quality 444 stainless steel and is insulated to give you instant boiling water from a smart, compact command centre.

- Two-way chrome-plated tap
- Stainless steel boiling tank
- Steam-Heat-Boost™ technology
- Corrosion-resistant white enamelled steel case



CODE	TANK SIZE (LITRES)	CUPS* AT ONE TIME	CUPS* PER HOUR	HEAT UP TIME (INLET 15°C)	HEAT UP TIME (INLET 10°C)	POWER RATING KW@240V	FILLED WEIGHT (KG)	SIZE W X D X H (mm)
303542	3	18	100	11 mins	12 mins	1.5	12.5	289 x 180 x 431
305542	5	30	140	12 mins	13 mins	2.4	16.5	318 x 198 x 465

\*167ml

Featured product  
Zip EconoBoil



# HydroBoil

Enjoy no waiting time with this convenient, reliable and safe wall-mounted instant boiling water boiler. Using Steam-Heat-Boost™ technology to conserve significant amounts of energy, the HydroBoil is available in 1.5 to 40 litre capacities, ensuring suitability for every application. Tap locks on to fill pots hands-free.

- Two-way chrome-plated tap
- Available in 1.5 to 40 litre capacities
- Stainless steel twin chamber boiling tank
- Premium insulation
- Steam-Heat-Boost™ technology
- Corrosion-resistant white enamelled steel case
- Heating cycle indicator



CODE	TANK SIZE (LITRES)	CUPS* AT ONE TIME	CUPS* PER HOUR	HEAT UP TIME (INLET 15° C)	HEAT UP TIME (INLET 10° C)	POWER RATING KW@240V	FILLED WEIGHT (KG)	SIZE W X D X H (mm)
301552	1.5	9	100	5.8 mins	6 mins	1.5	10	289 x 180 x 335
303552	3	18	100	11 mins	12 mins	1.5	12.5	289 x 180 x 431
305552	5	30	140	12 mins	13 mins	2.4	16.5	318 x 198 x 465
307552	7.5	45	140	18 mins	19 mins	2.4	20.5	318 x 198 x 578
310552	10	60	180	21 mins	22 mins	2.8	29.5	390 x 244 x 600
315552	15	100	180	31 mins	33 mins	2.8	34.5	390 x 299 x 600
325552	25	150	180	52 mins	55 mins	2.8	47	390 x 299 x 780
340552	40	240	360	41 mins	44 mins	5.6	71	515 x 284 x 840

\*167ml

Featured product  
Zip HydroBoil



# HydroBoil Plus

Our most technologically advanced model, the HydroBoil Plus is designed to cut energy consumption. State-of-the-art technology maintains boiling water to within 0.5°C of set temperature.

In addition, the HydroBoil Plus features energy-saving Power-Pulse™ technology, inactivity and low-light sleep modes, along with timer settings for ease of use and efficiency.

The HydroBoil Plus is equipped with a two-way safety tap and safety lock. This cool-touch tap also increases efficiency by enhancing the insulation of the boiler. The safety lock, located to the right, is an additional feature making it easy to restrict use of boiling water where safety is a prime consideration.

- Unique two-way cool touch tap
- Stainless steel twin chamber boiling tank
- Premium insulation
- Energy-saving Power-Pulse™ technology
- Sleep mode and integral timer
- Steam-Heat-Boost™ technology
- Liquid crystal display shows time, day, heater operation and energy saving mode status
- Corrosion-resistant white enamelled steel case



CODE	TANK SIZE (LITRES)	CUPS* AT ONE TIME	CUPS* PER HOUR	HEAT UP TIME (INLET 15°C)	HEAT UP TIME (INLET 10°C)	POWER RATING KW@240V	FILLED WEIGHT (KG)	SIZE W X D X H (mm)
303562	3	18	100	11 mins	12 mins	1.5	12.5	289 x 180 x 431
305562	5	30	140	12 mins	13 mins	2.4	16.5	318 x 198 x 465
307562	7.5	45	140	18 mins	23 mins	2.4	20.5	318 x 198 x 578

\*167ml

Featured product  
Zip HydroBoil Plus



# Accessories and consumables



### Safety tap top assembly

**93734**

Prevents boiling water being dispensed accidentally. To dispense, a lever on the back of the handle needs to be released.

### Insulating tap body cover

**94514**

For EconoBoil and HydroBoil. A heat cover for exposed tap outlets preventing the user from any accidental burns.



### Inline filter

**FL064**

6" filter for taste and odour removal with limescale reduction. For use with HydroBoil up to 7.5 litre models.



### Inline filter

**FL104**

10" filter for taste and odour removal with limescale reduction. For use with HydroBoil 10 litre models and above.



### Tundish

**ZD100** Wall mounted, chromed.  
**ZD101** Sink mounted, chromed.



### Cup dispensers

**ZE001**

Stainless steel (as shown).

**ZE002**

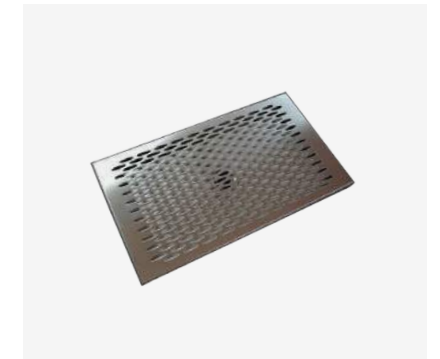
White plastic.



### Standalone font

**93441UK**

Bright chrome (with drain adaptor).  
Ø176 font outline.



### Drip tray

**ZD200**

Stainless steel (with drain adaptor).

Drip tray dimensions:  
W: 340mm x D: 190mm x H: 20mm  
with a 19.5mm drainage access.

# Installation – It's as simple as A-B-C

## A. Location

The system should be installed over a sink, draining board or over a worktop equipped with a portable or plumbed drip tray. Tap outlet clearance to drainer should be no less than 280mm, nominally 360mm. Service access clearances must be at least 150mm above, 65mm to left, 20mm to right.

The vent pipe within the case must discharge to a safe visible position as, under certain conditions, it may discharge cold water, boiling water, and/or steam. The vent pipe outlet must be connected via a tundish to a 15mm OD copper vent pipe which has a continuous fall, is no more than 3 metres long, has no more than 3 right angle bends and discharges to a waste water drain.

## B. Electrical

For a neat, concealed electrical connection, you can connect the cable from the rear directly to the internal terminal block. Installation must comply with current IEE wiring regulations.

The under 3kW rated models require an easily accessible 1 x 230V AC 13A double pole isolation switch or socket (correctly rated for the appliance). For 2 x 3kW rated models, connect a separate 230V AC ring main rated at no less than 32A, isolated by an easily accessible double pole isolation switch.

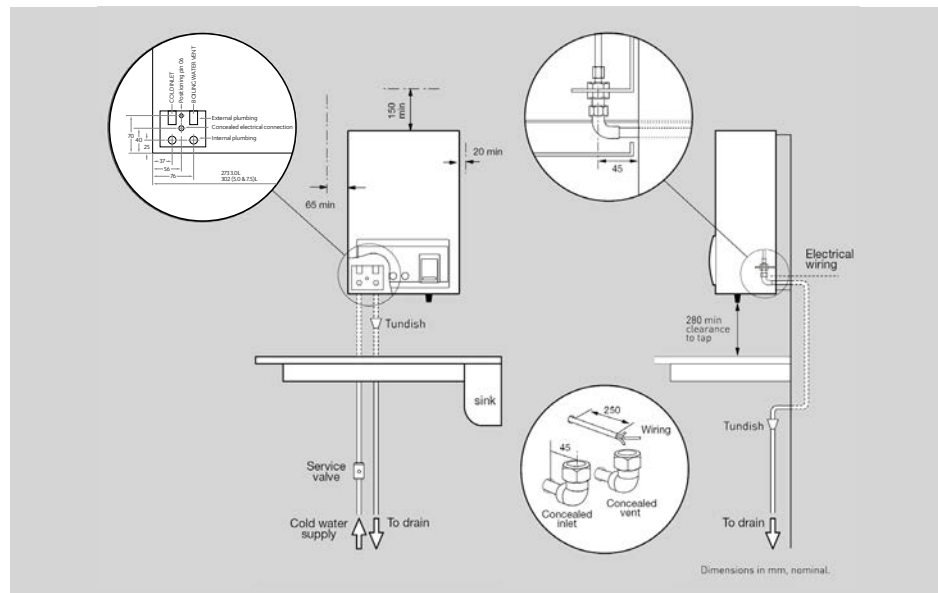
## C. Plumbing

The system must be installed by a qualified tradesperson and in accordance with the instructions supplied with the system. The water supply must be wholesome (drinkable) and deliver at least 2 litres per minute at a minimum dynamic pressure of 1 bar.

A pressure reducing valve must be installed if water pressure is likely to exceed 5 bar.

A service valve must be installed between the water supply and the system. For a concealed plumbing connection, connect inlet and vent pipes from the rear via 15mm capillary elbows as shown.

For an exposed plumbing connection, connect inlet and vent pipes from the base of the case directly to 15mm compression fittings.



# Zip HydroCare

To ensure your product continues to provide crystal clear, pure tasting water for its lifetime, we recommend signing up for our HydroCare or HydroCare Plus service plan.

Take one thing off the to-do list with reliable, pre-scheduled services and filter changes. HydroCare is flexible, cost-effective and tailored to you.

With over 70 years' experience, Zip Water is the most trusted name in drinking water solutions. Speak to one of our expert team on 0345 6 005 005 to sign up to HydroCare and ensure you're getting the very best out of your product.

## Your comprehensive HydroCare service plan includes:

- Taste filter replacement
- On site parts and labour
- Extended warranty
- Unlimited call-outs
- Annual inspection
- Pre-scheduled planned services
- System replacement\*
- Priority response

For areas where water quality is a concern we also offer HydroCare Plus, which includes everything mentioned above, with the addition of tailored limescale management.

\*Terms and conditions apply

# Warranty

The **HydroBoil** and **HydroBoil Plus** are covered by a 2-year on site parts and labour warranty.



**EconoBoil** is covered by a 1-year on site parts and labour warranty.







0345 6 005 005

[specify.zipwater.co.uk](http://specify.zipwater.co.uk)